

APPENDIX T-1:

Intersection Geometries

N

BREWSTER STREET

PRATT BOULEVARD

GLEN COVE AVENUE

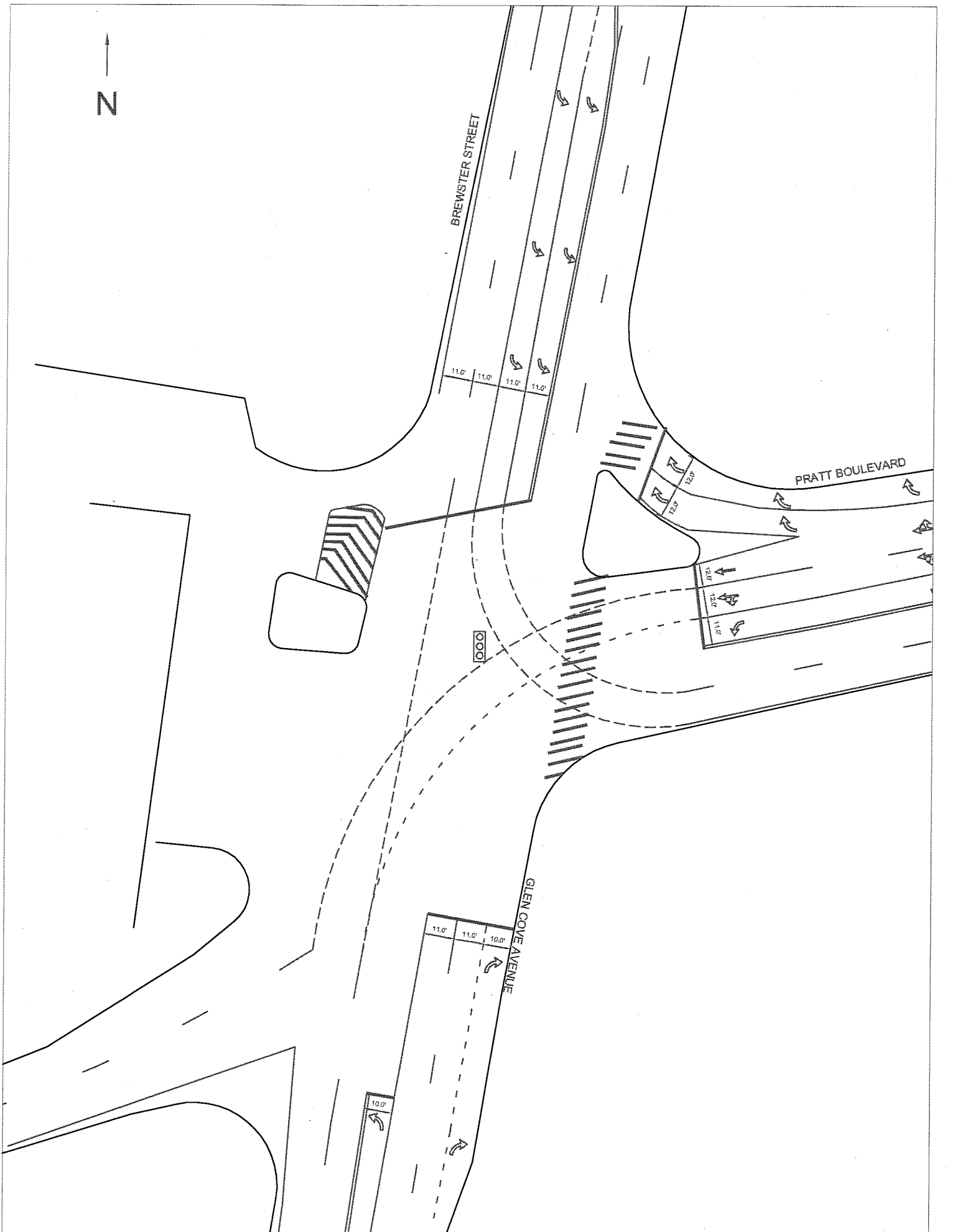
11.0' 11.0' 11.0' 11.0'

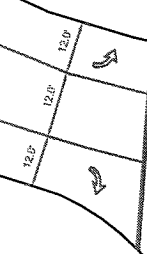
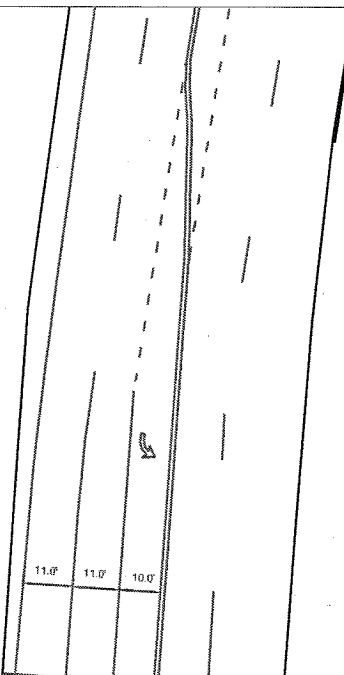
12.0' 12.0'

12.0' 12.0' 11.0'

11.0' 11.0' 10.0'

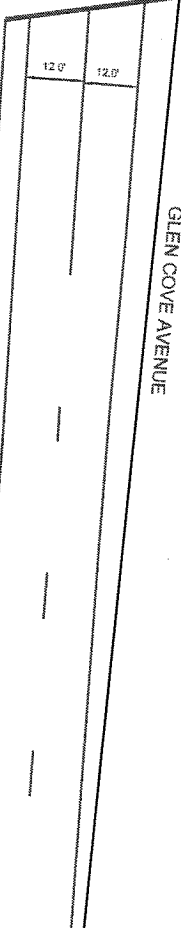
10.0'



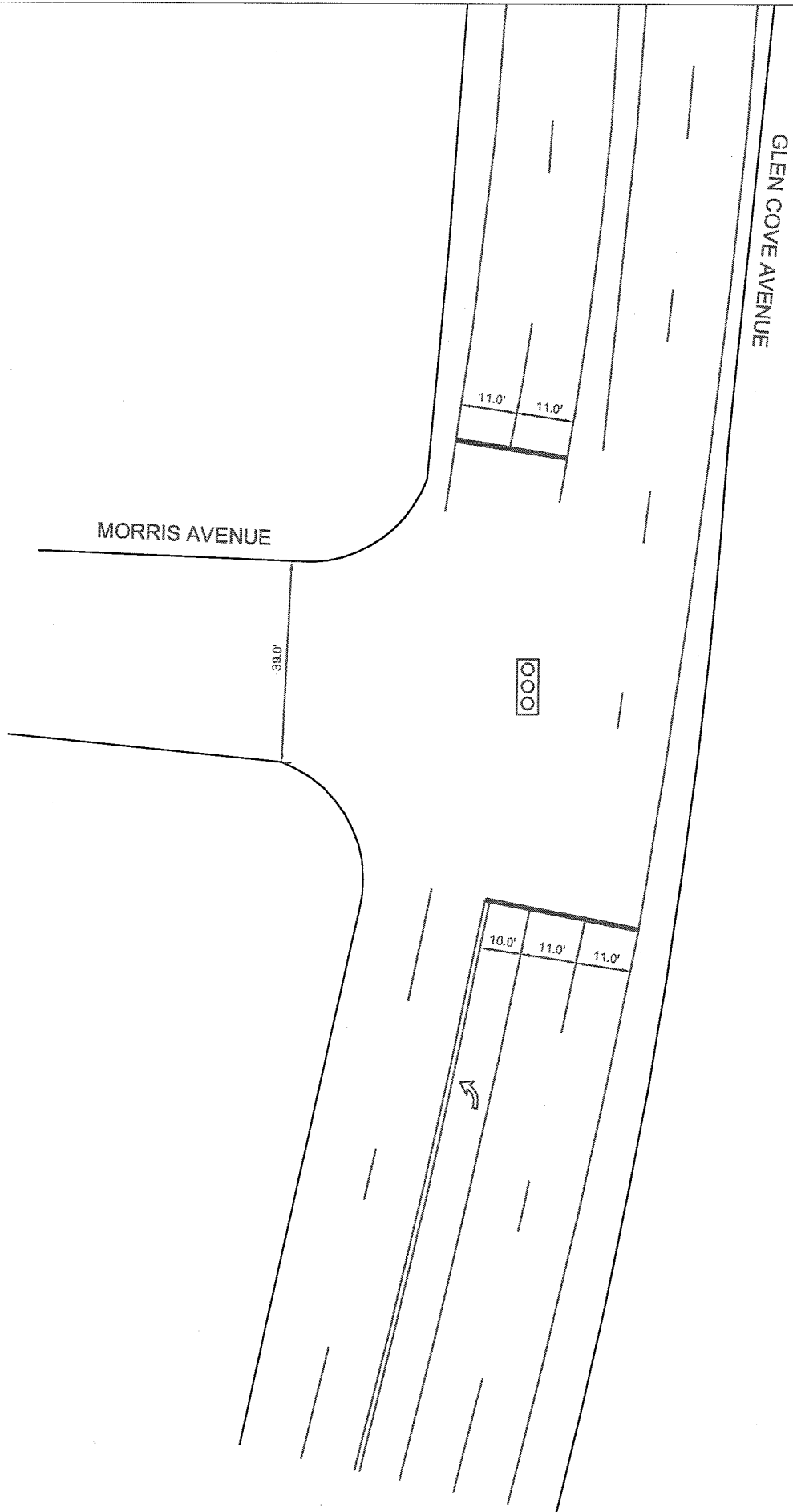


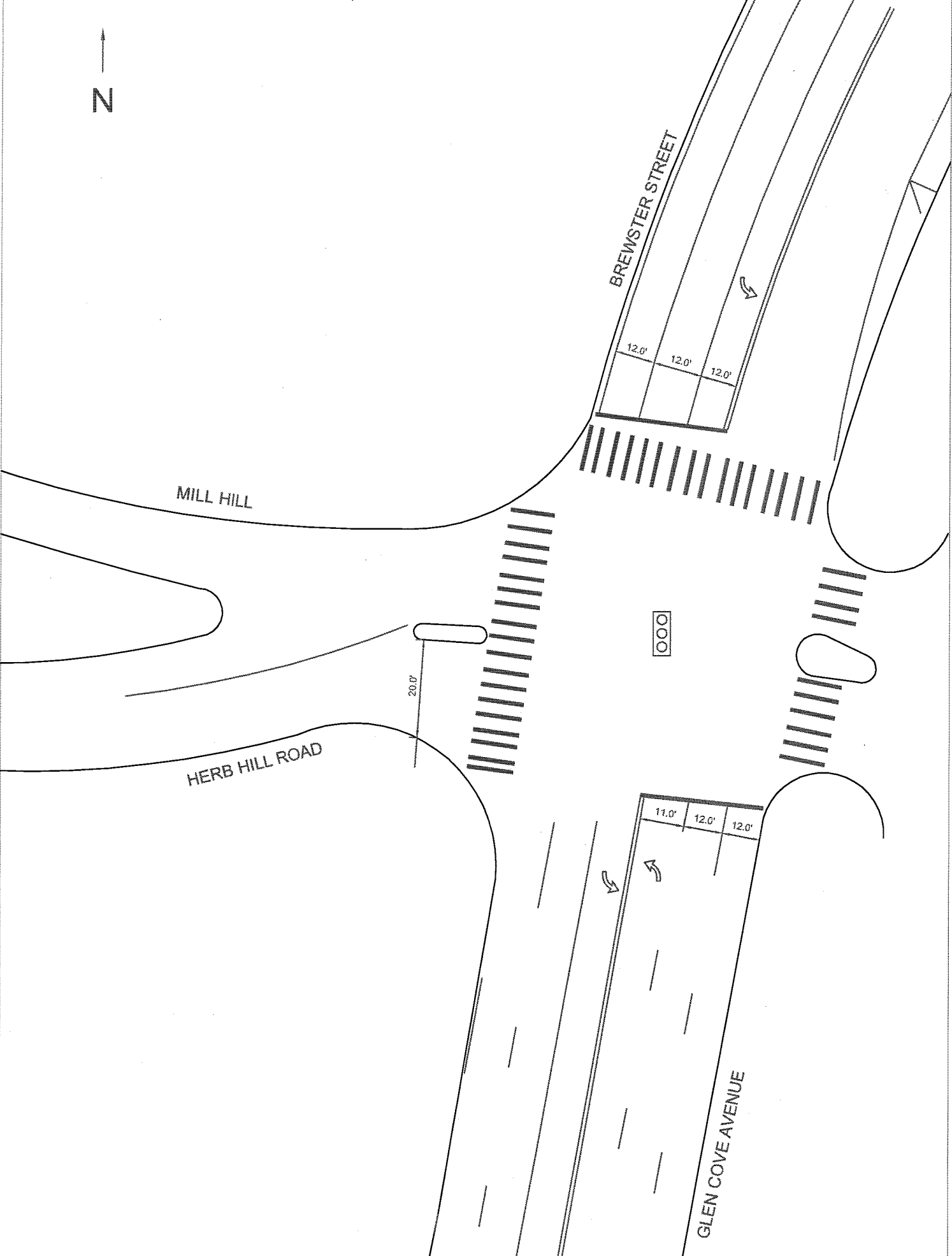
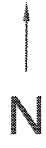
000

CHARLES STREET



GLEN COVE AVENUE





MILL HILL

HERB HILL ROAD

BREWSTER STREET

GLEN COVE AVENUE

20.0'

12.0'

12.0'

12.0'

OOO

11.0'

12.0'

12.0'



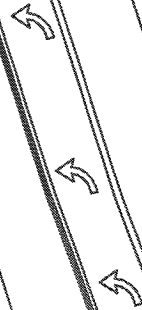
SHORE ROAD

GLEN COVE AVENUE

8' 11' 11' 10'

12' 13' 1'

10' 11' 11' 3'





GLEN COVE AVENUE

10'

SEACLIFF AVENUE

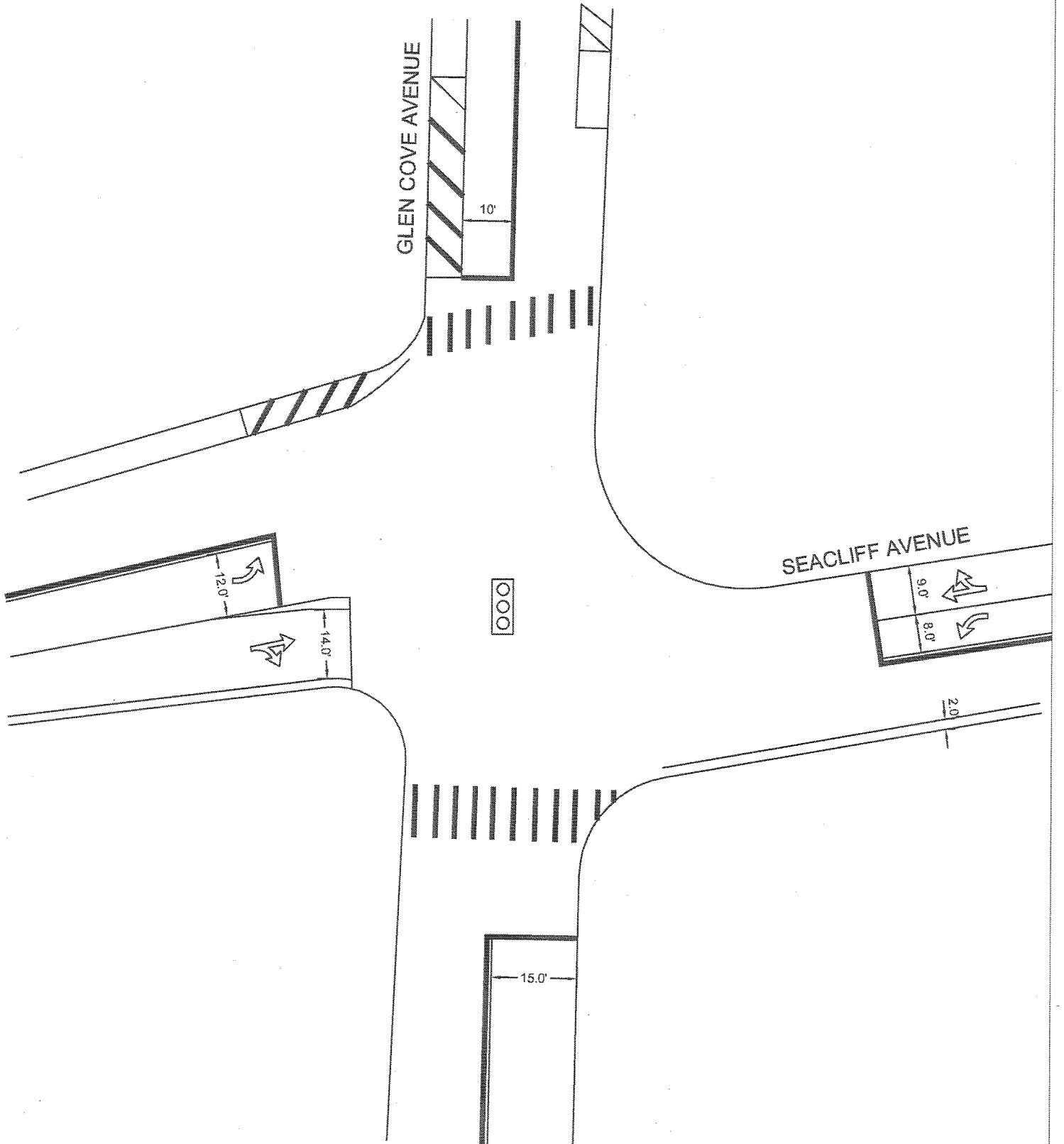
9.0'

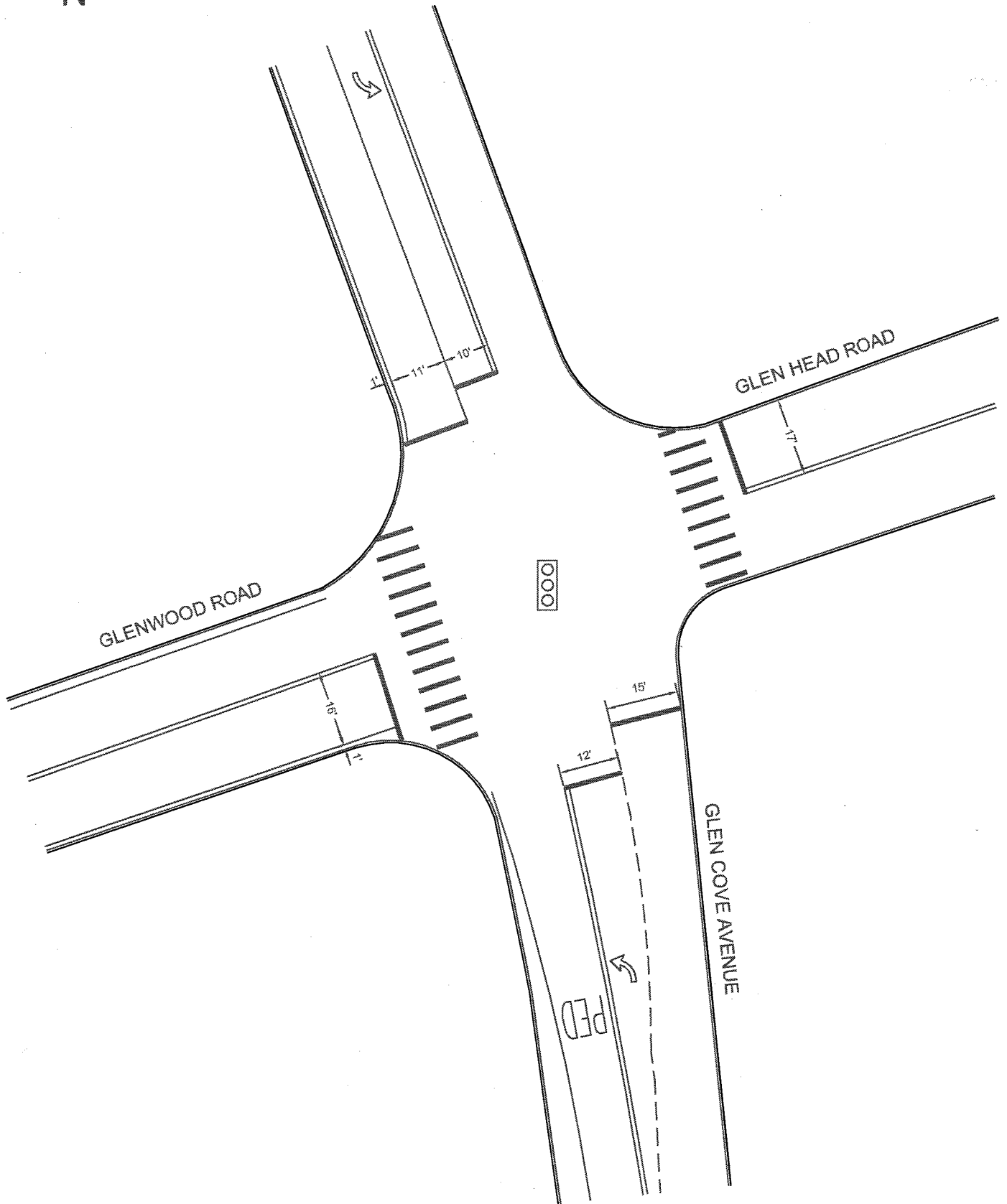
8.0'

2.0'



15.0'





N

GLEN COVE ROAD

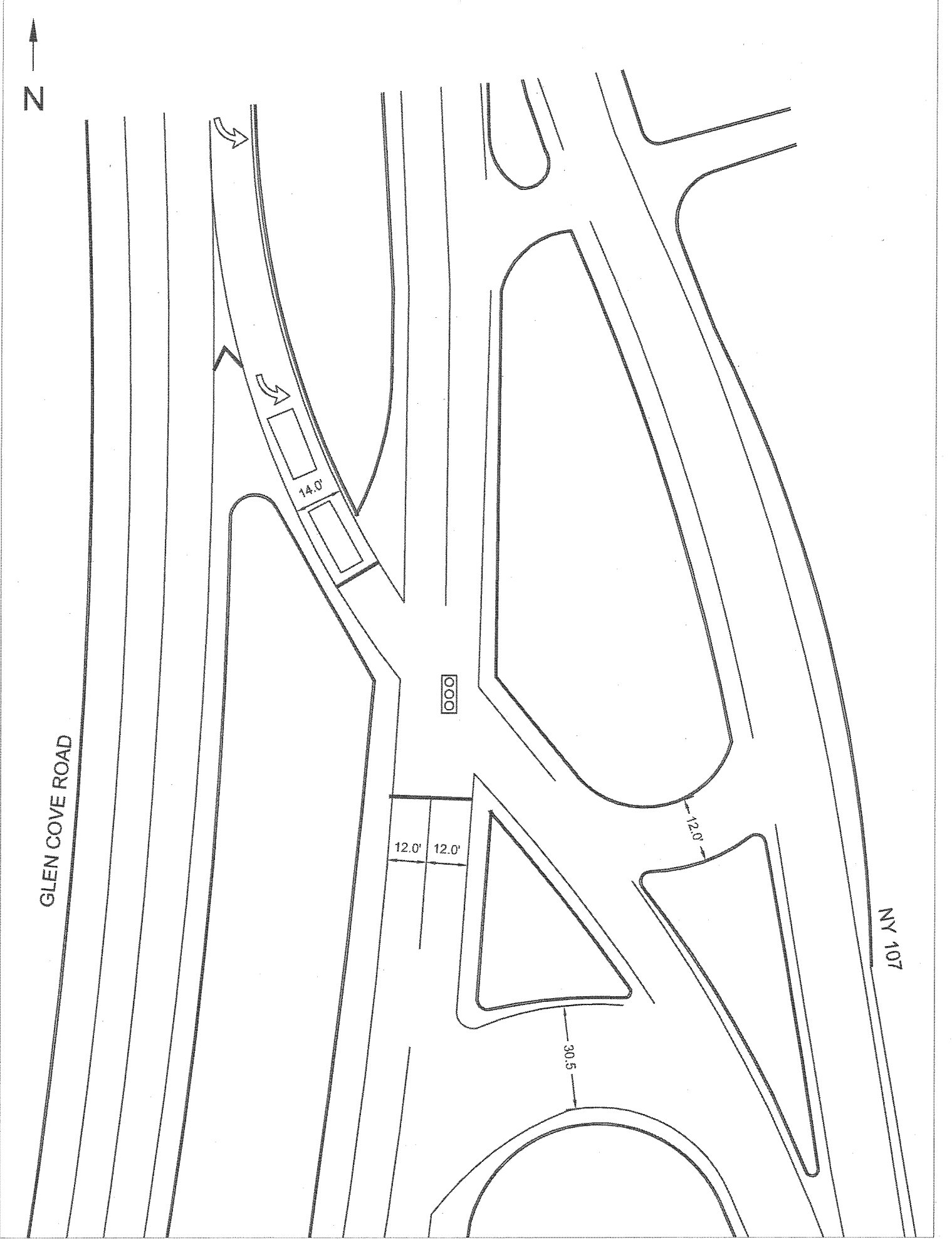
NY 107

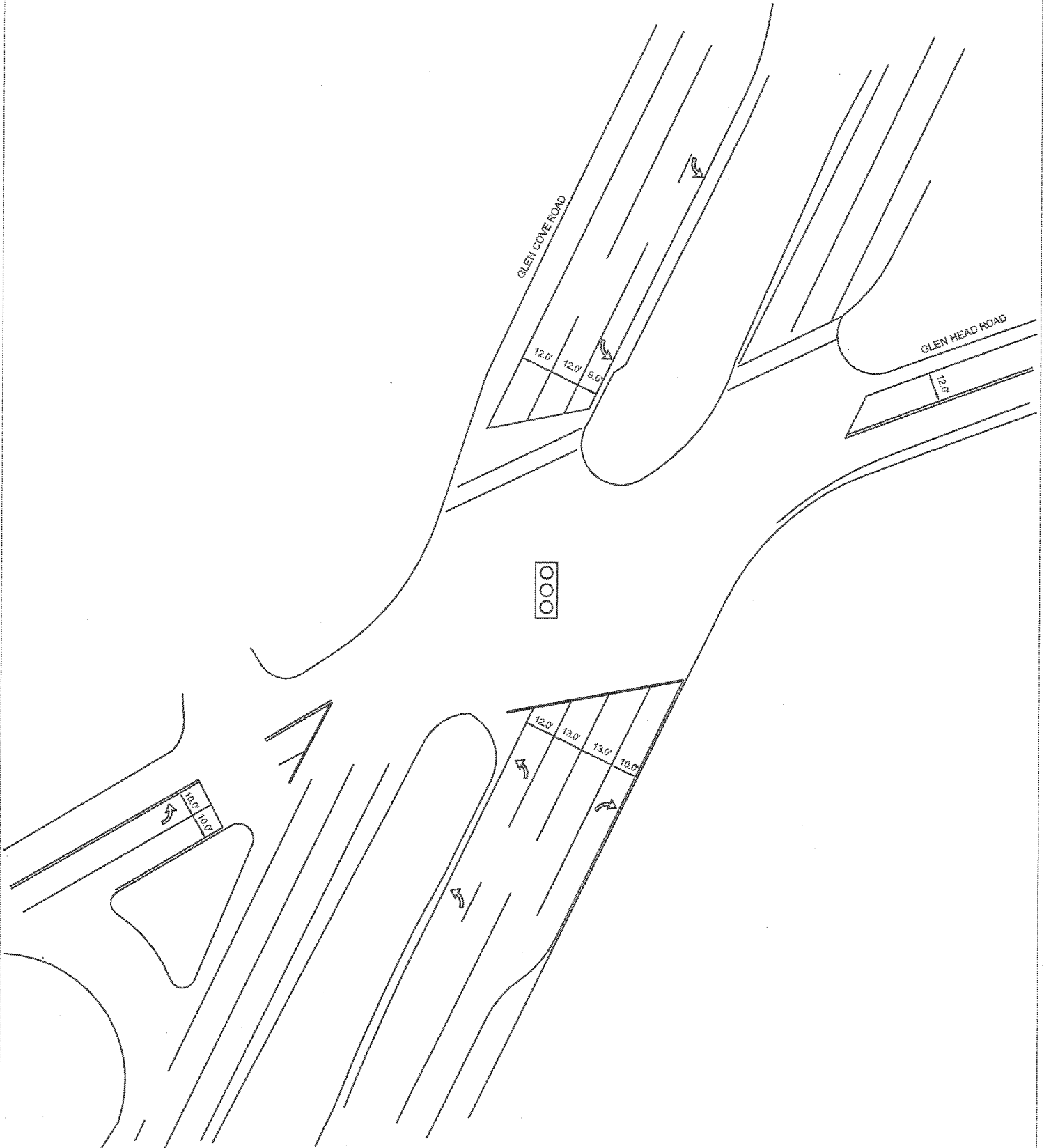
14.0'

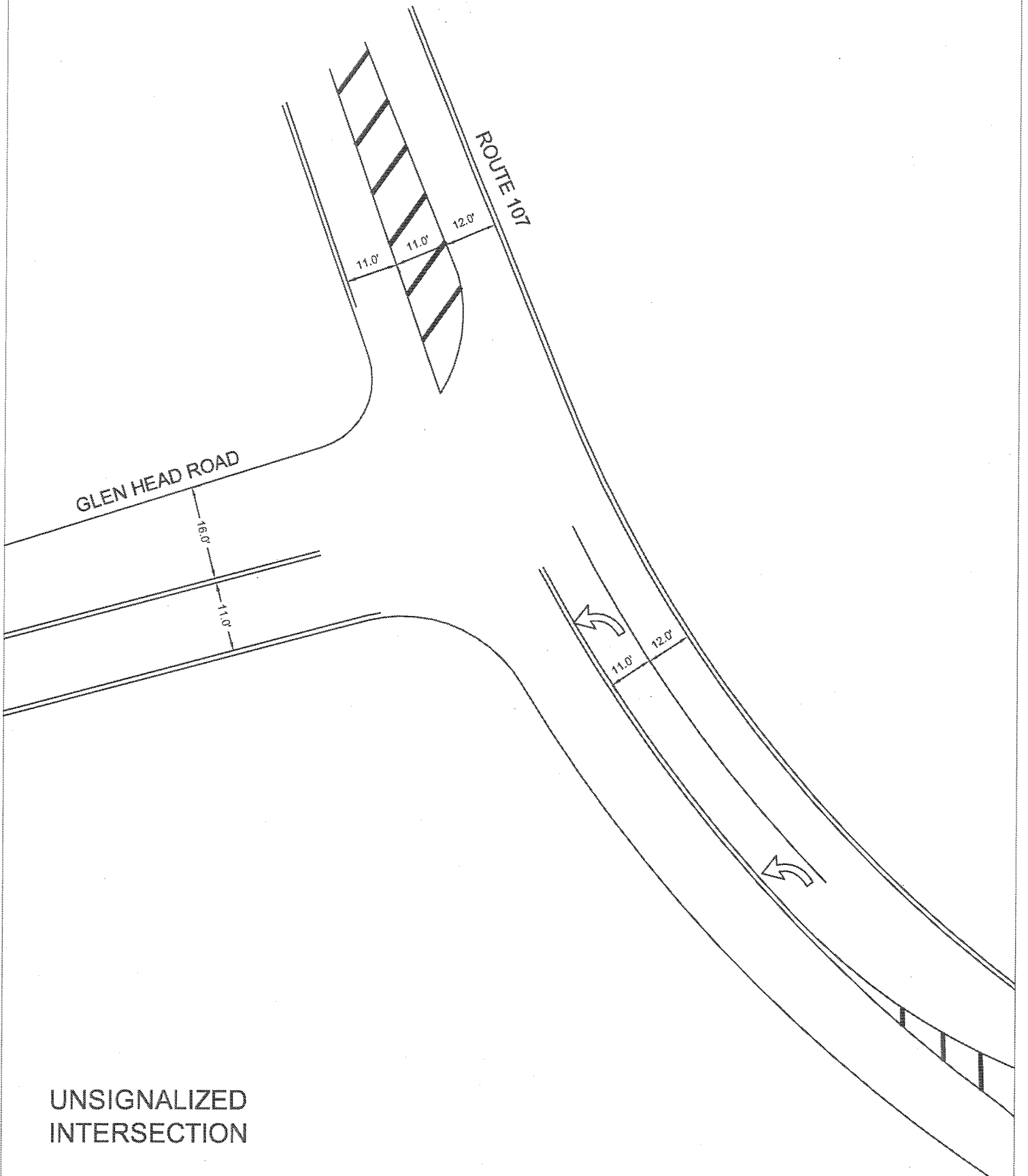
12.0' 12.0'

30.5

12.0'







N

GLEN COVE AVENUE

4'
13'

YIELD

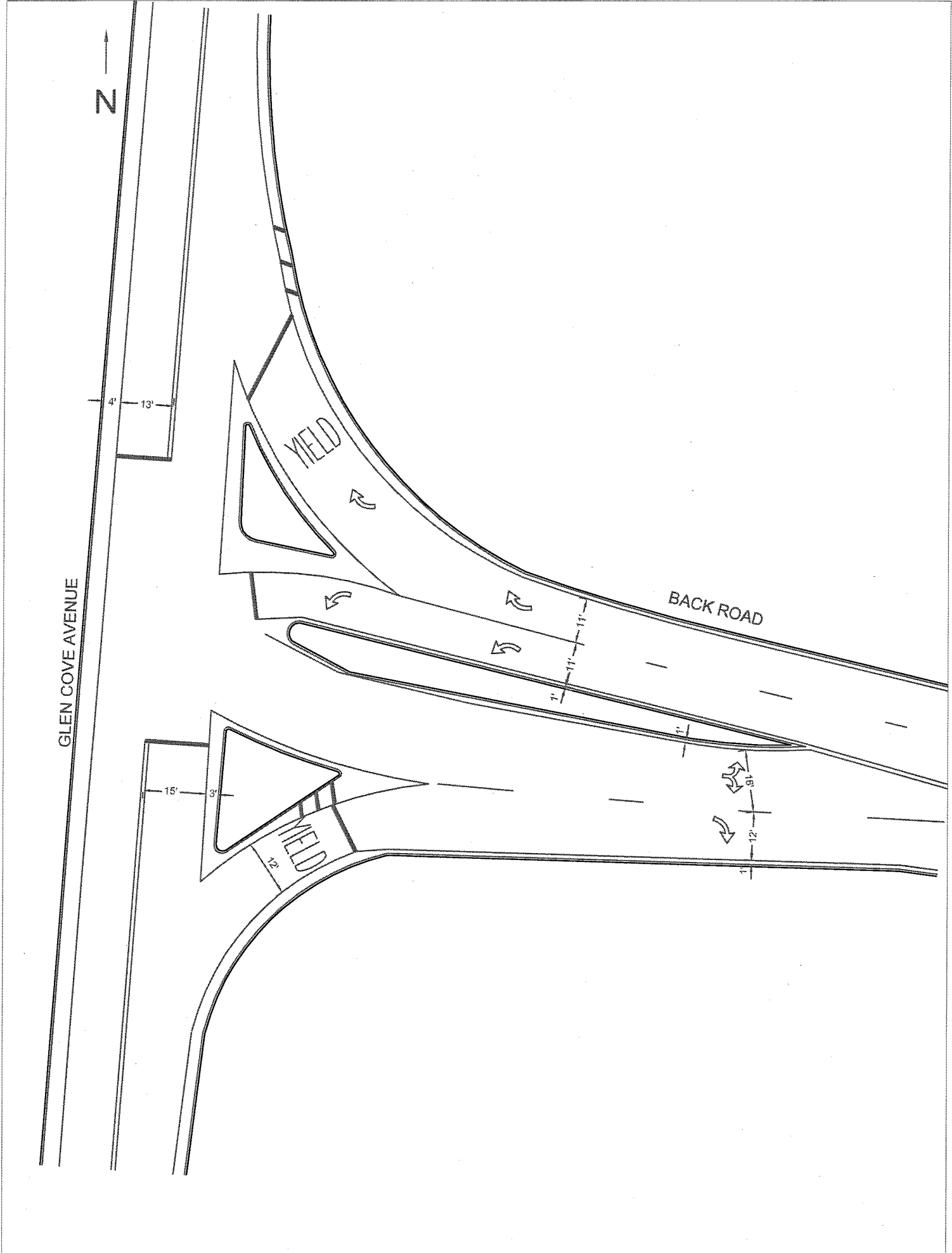
BACK ROAD

15'
3'

YIELD

11'
11'
11'

9'
12'





BRIDGE STREET

12.0' 12.0'

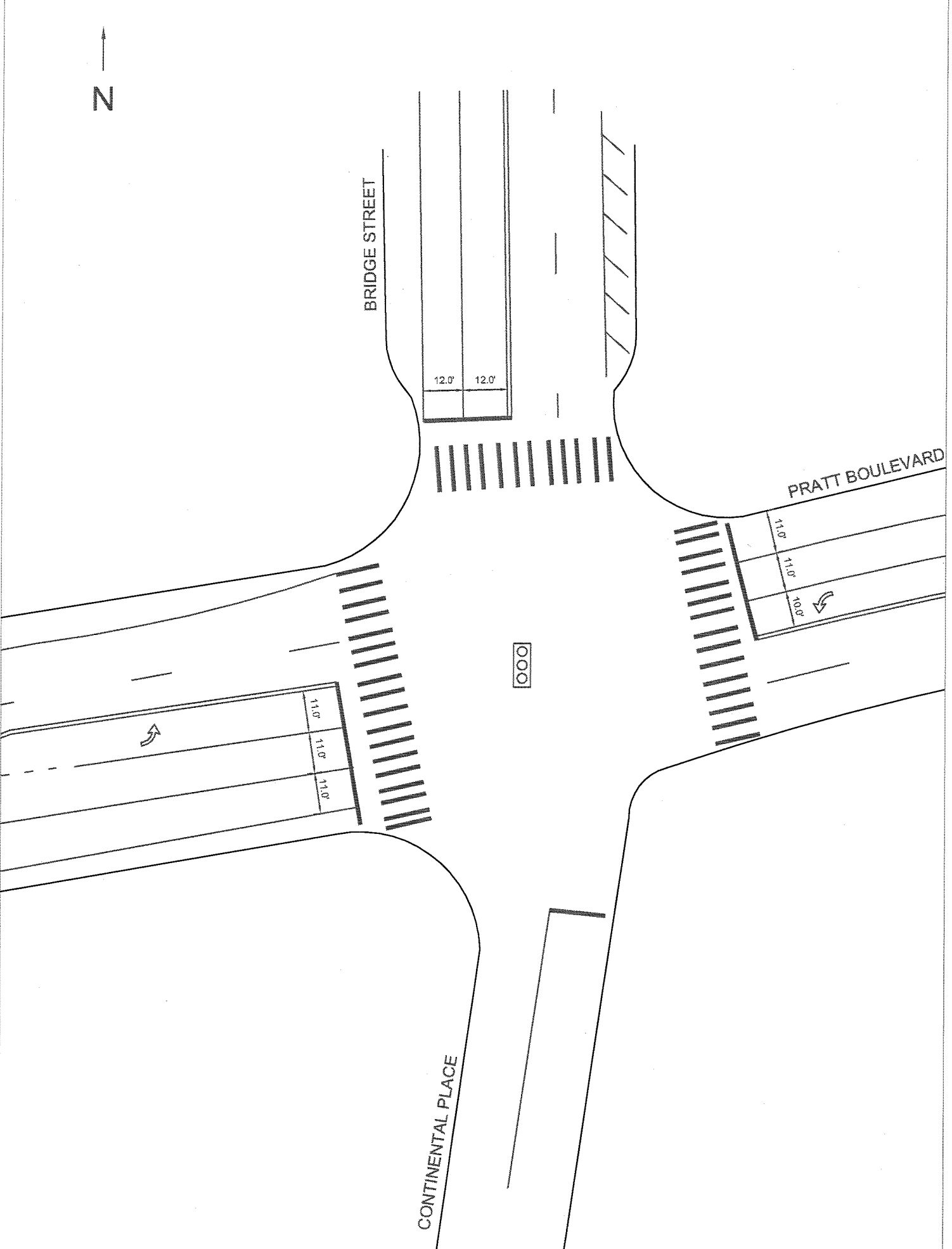
PRATT BOULEVARD

11.0' 11.0' 10.0'

000

11.0' 11.0' 11.0'

CONTINENTAL PLACE



N

HERB HILL ROAD

11.0' 11.0'

12.0'



CHARLES STREET

12.0'

12.0'

12.0'

12.0'

18.0'



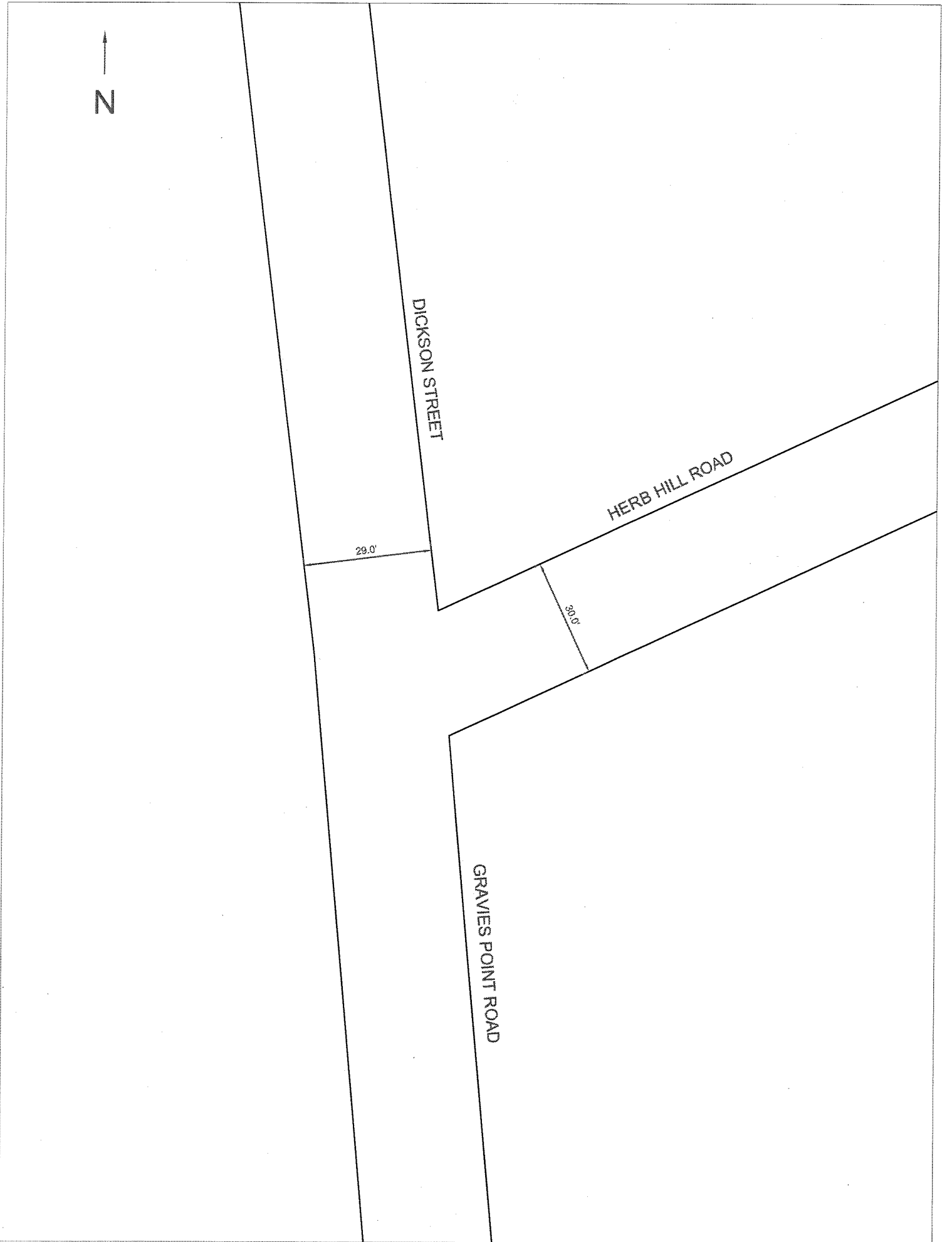
DICKSON STREET

HERB HILL ROAD

GRAVIES POINT ROAD

29.0'

30.0'





LATTINGTOWN ROAD

FOREST AVENUE

14.0'

14.0'

12.0'

10.0'

11.0'

14.0'



